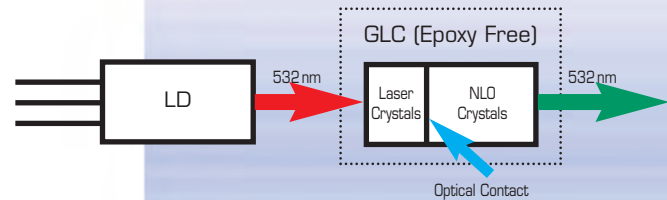


## Green Laser Core

For DPSS lasers a combination of Nd:YVO4 laser crystal and KTP frequency doubler with all the necessary reflection and antireflection coatings can be provided as Green Laser Core (GLC). Beside the standard GLC with up to 100 mW of green light epoxy free GLC based on optical bonding are available for high power application up to 1 W of green light.

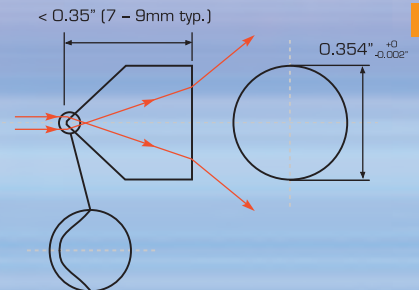


**NEW**

## Line Laser Optics

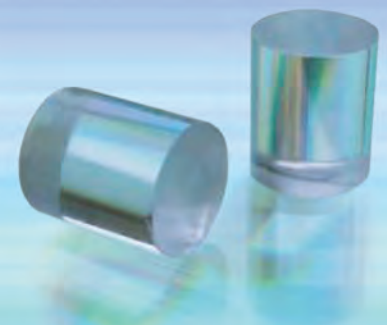
### Powell Lens

The Powell lens as a laser line generator (LLG) is a kind of aspherical lens which can transform a laser beam into a straight laser line. By using the LLG, you can get more even energy distribution along the laser line than using rod or cylinder lenses. Available fan angles are 10,30,45,60 and 90 degrees. For inquiries we need required fan angle, working distance, diameter and divergence of input laser beam.



### Rod Lens

Rod lenses are highly polished on the outer surface and ground on both ends. When illuminated from the side, its performance is similar to a cylinder lens. Collimated laser passing through the diameter of the rod lens will be focused into a laser line. The material is BK7. It is an excellent performance, cost effective solution for line laser modules.



#### Features:

- accurate fan angle
- excellent uniformity

#### Applications:

- machine vision
- alignment
- construction
- process control

